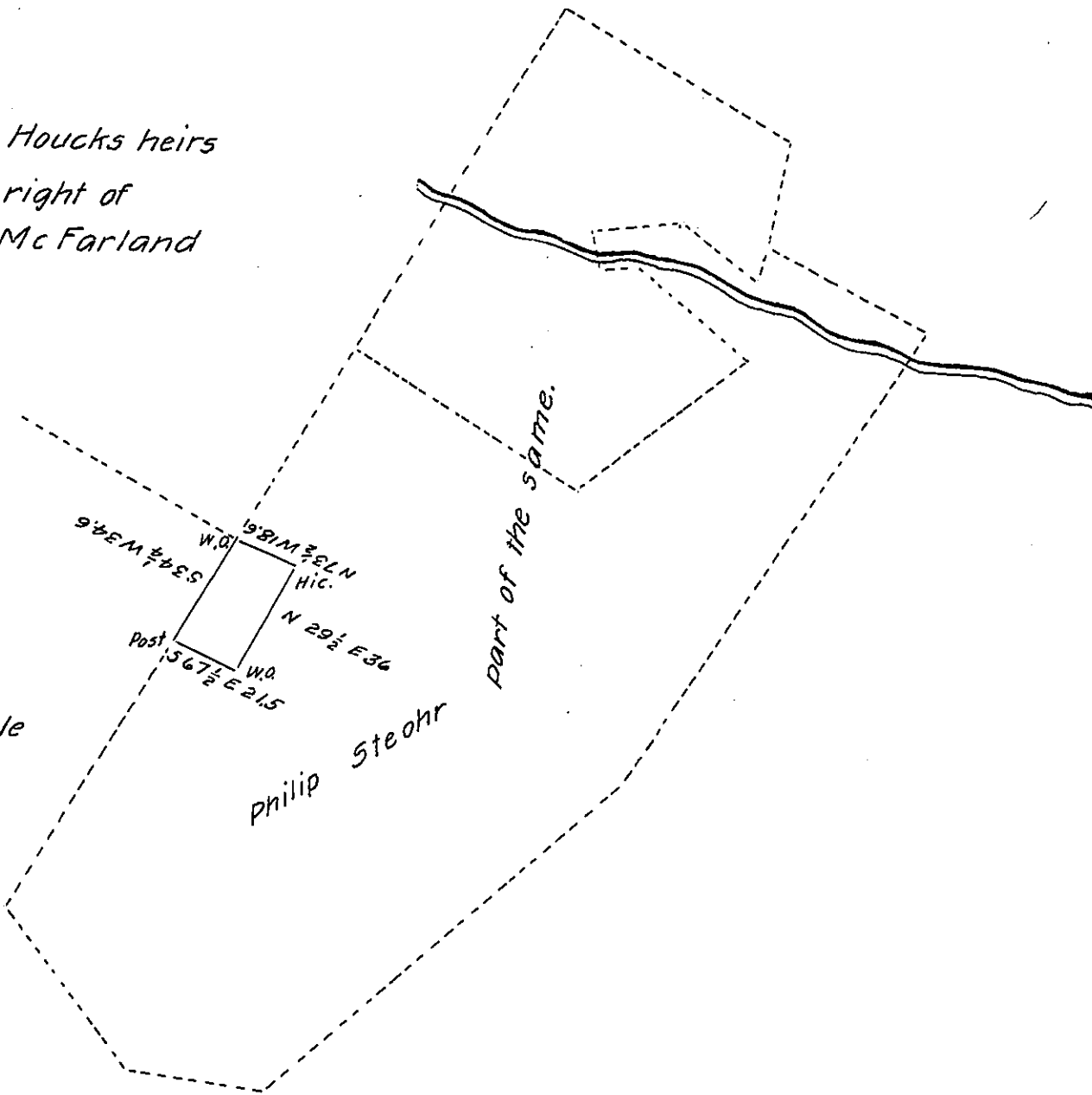


John Houcks heirs
in right of
Jas. McFarland

John Brindle
in right of
Michael Campble



Draught containing four acres and twelve perches & allowance part of 230 a 88 p & allowance. Surveyed in pursuance of a warrant granted to Philip & John Houck dated April 19th 1810, in St. Thomas Township Franklin County Pa. Surveyed the above part for John Brindle Decb. 8th 1851

Emanuel Kuhn

To Have

C.S.

J. Porter Brawley

S.G.

IN TESTIMONY that the above is a copy of the original remaining on file in the Department of Internal Affairs of Pennsylvania, made conformably to an Act of Assembly approved the 16th day of February, 1833, I have hereunto set my Hand and caused the Seal of said Department to be affixed at Harrisburg, this twenty seventh day of July 1904

Loac D. Brown
Secretary of Internal Affairs.